



USB Control Panel Installation Instructions

12/2024 v1.01

Contents

1. Content of “Setup & Driver” file. 2

2. Program Installation 3

3. Driver Installation: 5

4. Device Testing 8

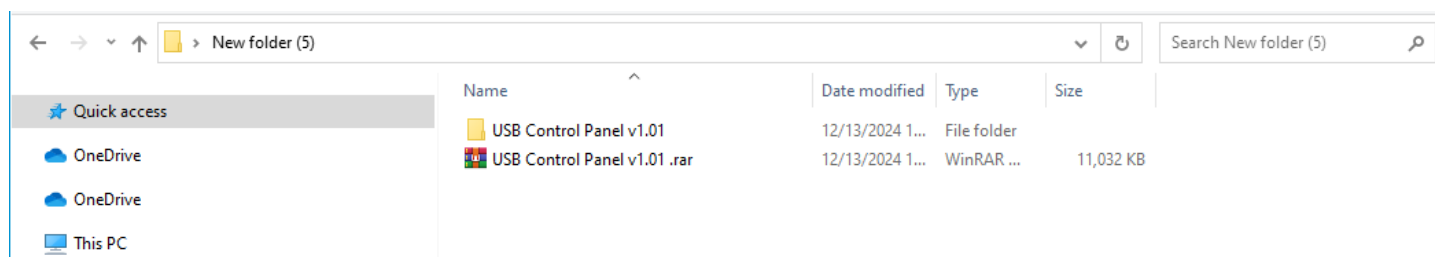
 I. Double clickexecutable file “USB Control Panel.exe” 8

 II. Useserial port assistant. 11

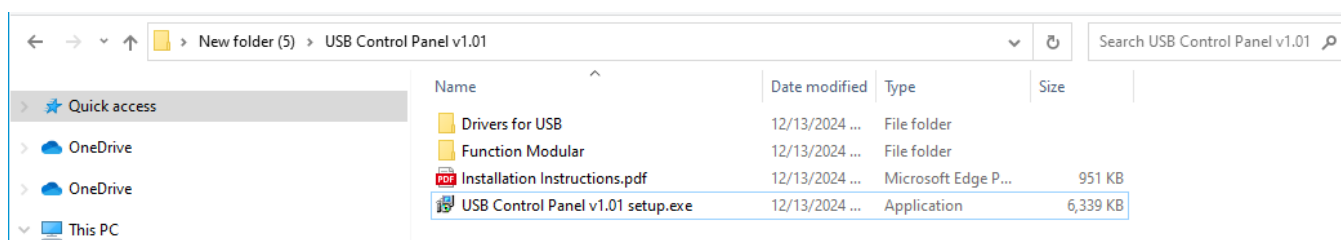
 III. Use ethernet port assistant. 11

1. Content Of Package.

1.1 Decompress “USB Control Panel v1.01 rar”



1.2 Open the folder and there will be four files. The first one is the Driver Program for Windows OS, the second one is the function modules for Labview(vi) and .Net platform(dll), the third one is the Installation Instructions(pdf), and the last one is the executable Installation Program.

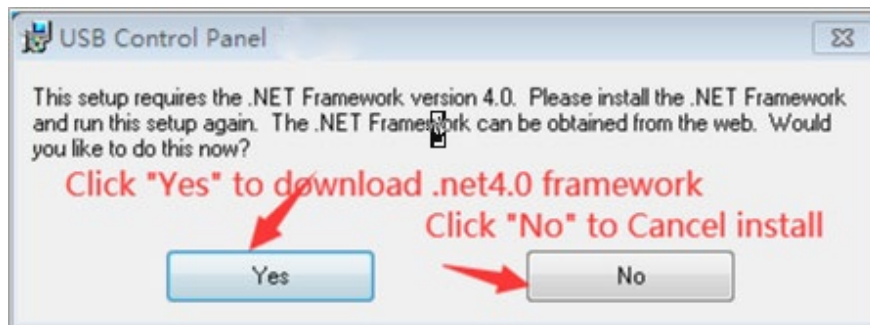


2. Program Installation

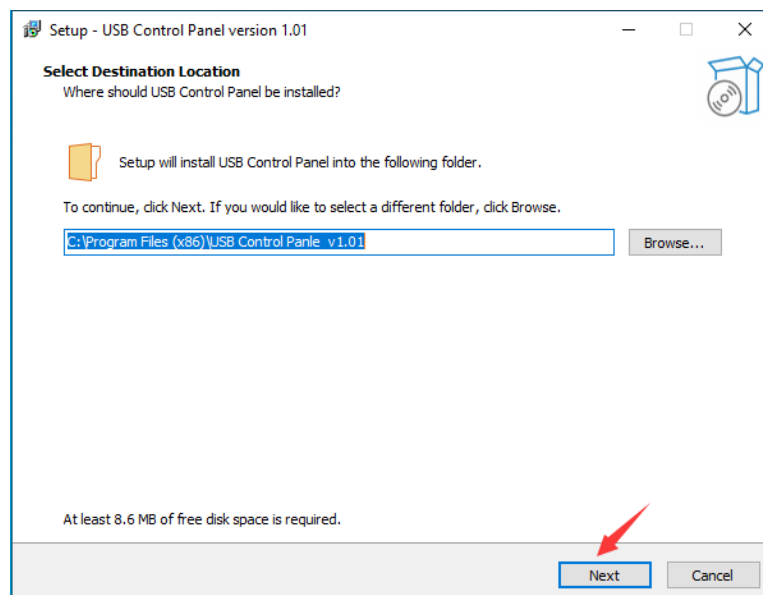
2.1 Double click the “USB Control Panel v1.01 setup.exe” file to start the installation:

There will be two cases when you start installation:

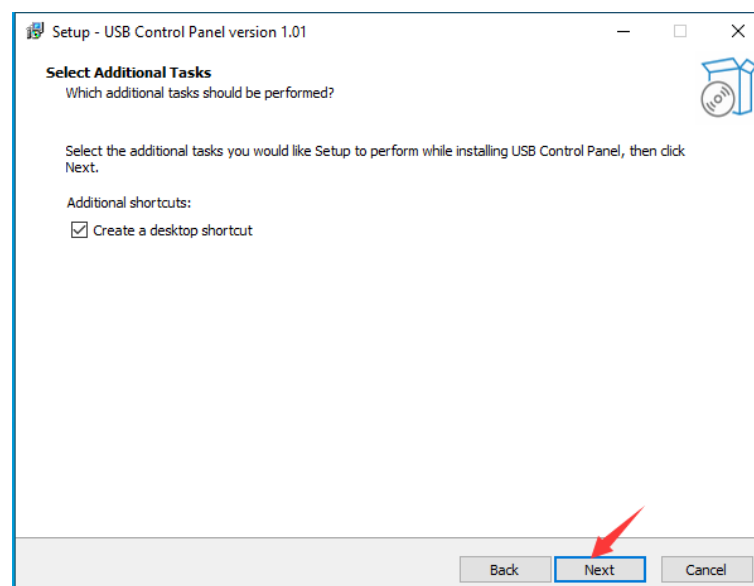
- (1) If your computer does not have .Net4.0 Framework or higher, there will be a pop out window showing below, and you must click “Yes” to download and install the Framework first; otherwise, the USB Control Panel setup cannot be processed.



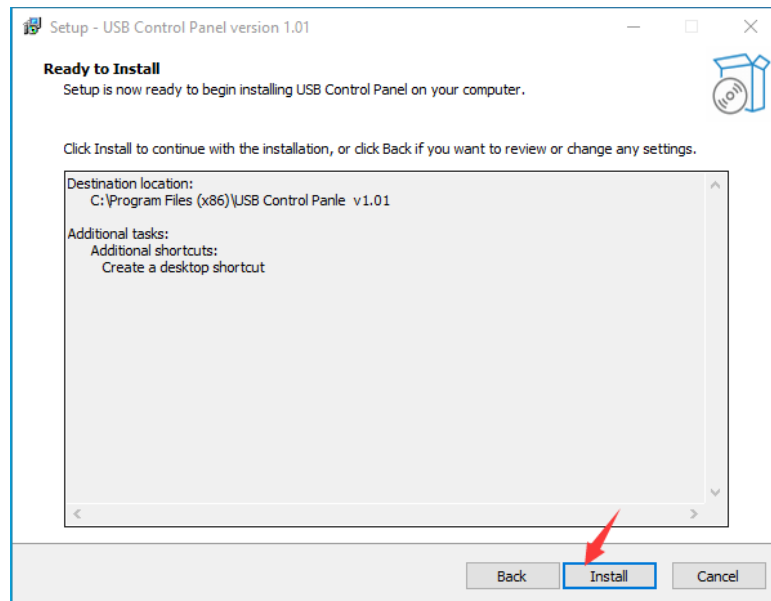
- (2) If your computer has installed .Net4.0 Framework or higher, the “Setup 1.01” will open an installation page as shown below.



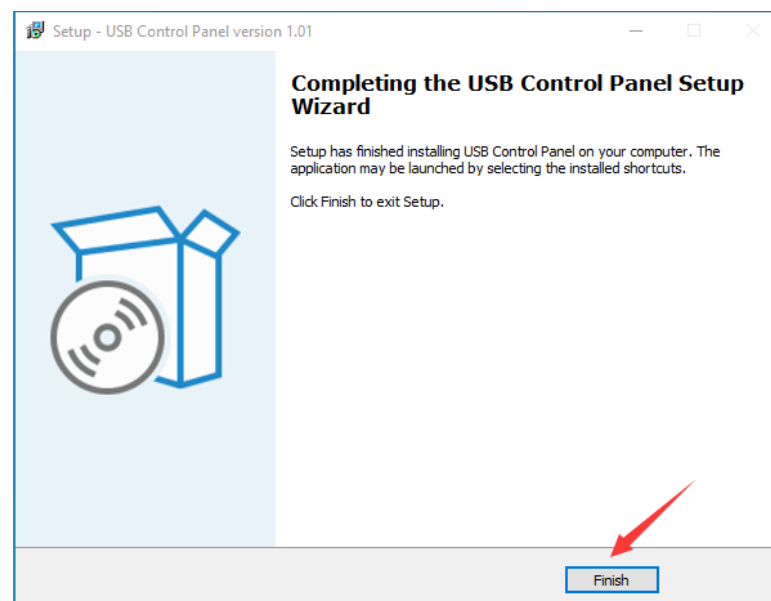
2.2 Click “Next”:



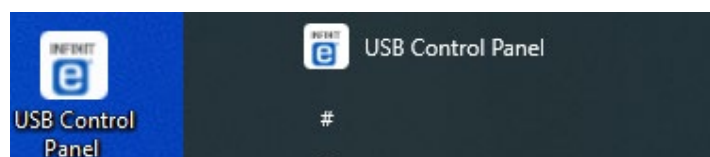
2.3 Click “Next”:



2.4 Click “Install”:

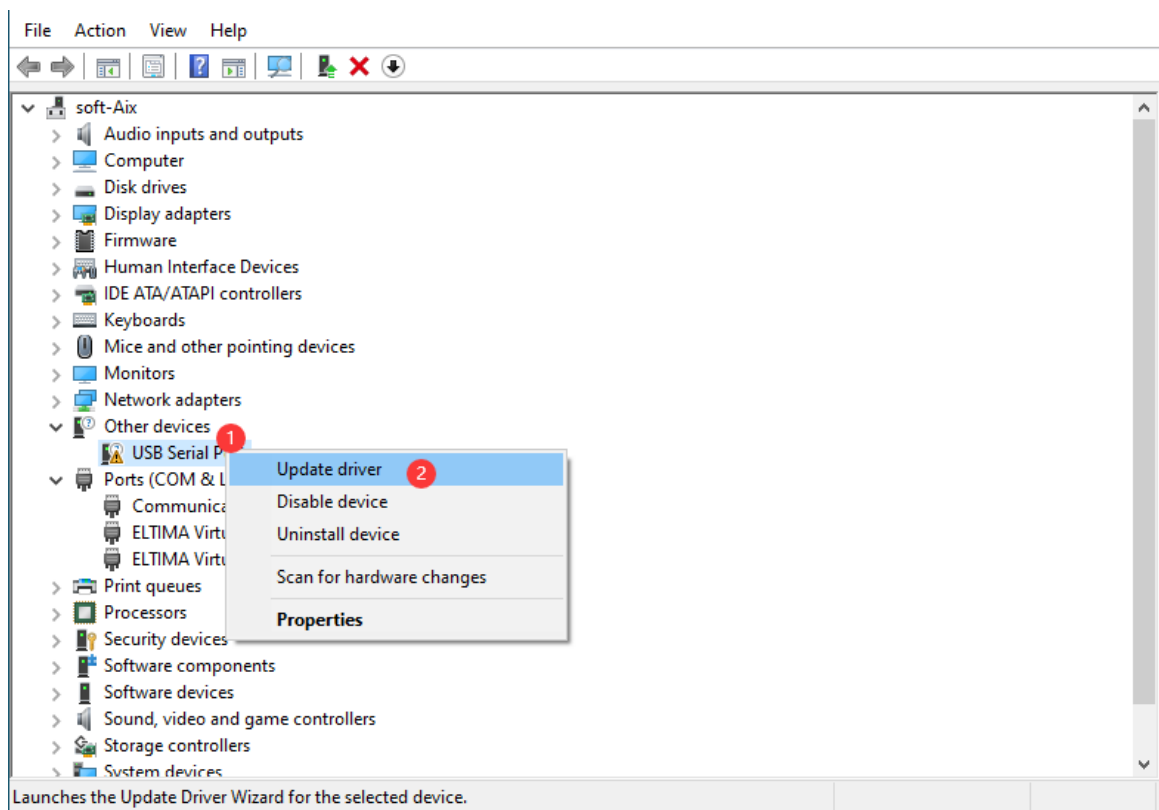


2.5 After the installation, it will create a shortcut on desktop and start menu as shown below.

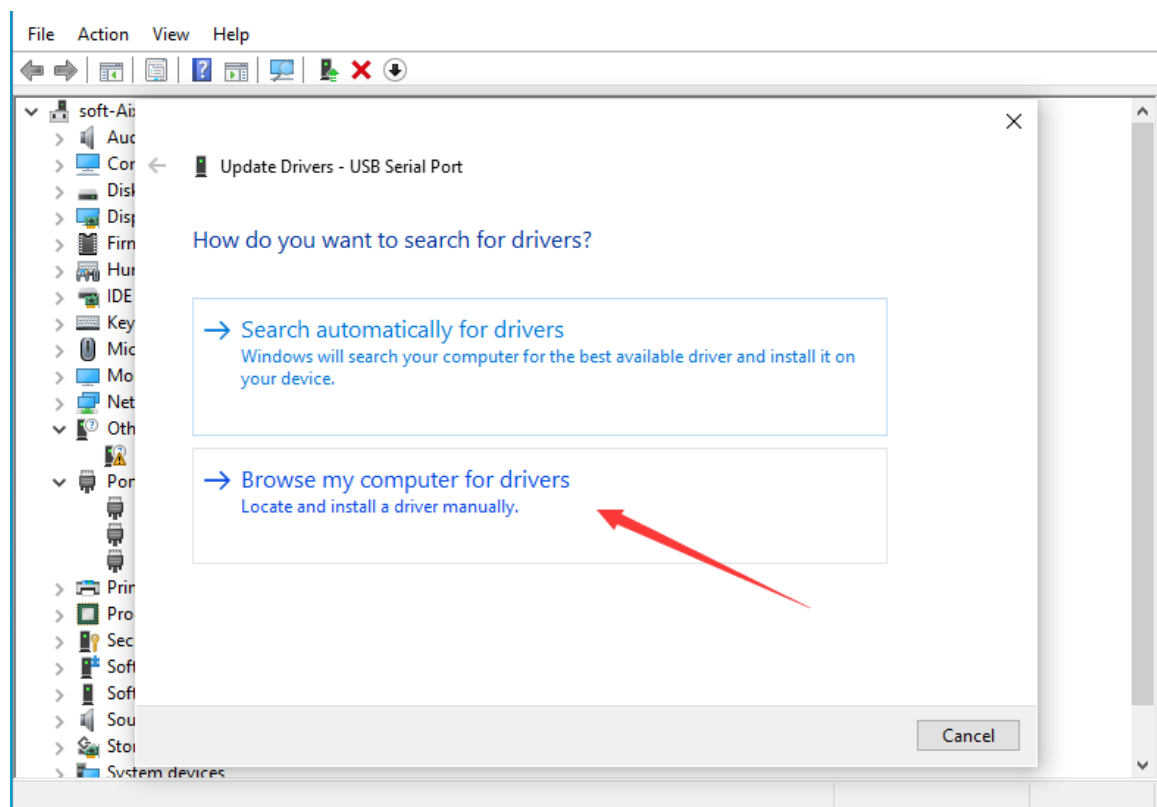


3. Driver Installation:

- I. Connect the device on the USB port, and then find the device under “Device Manager”. Right-click it and choose “Update Driver Software”.

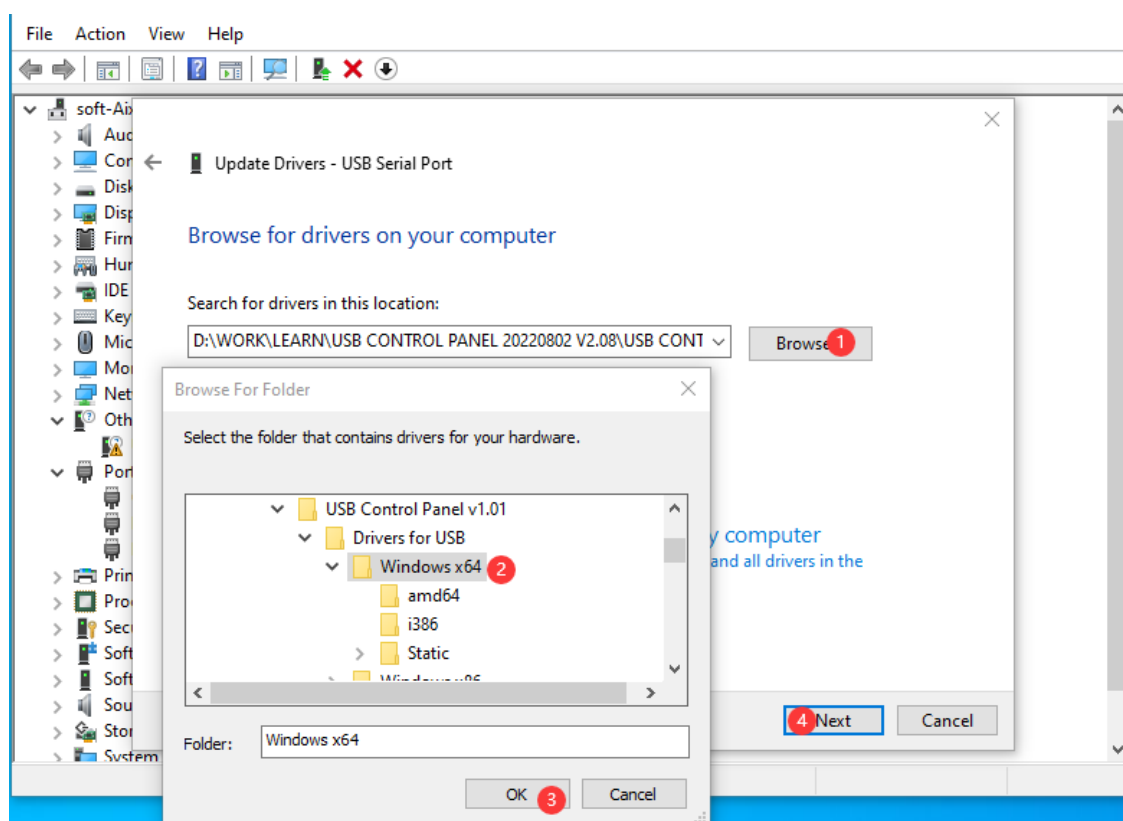


- II. Select “Browse my computer for drivers”.

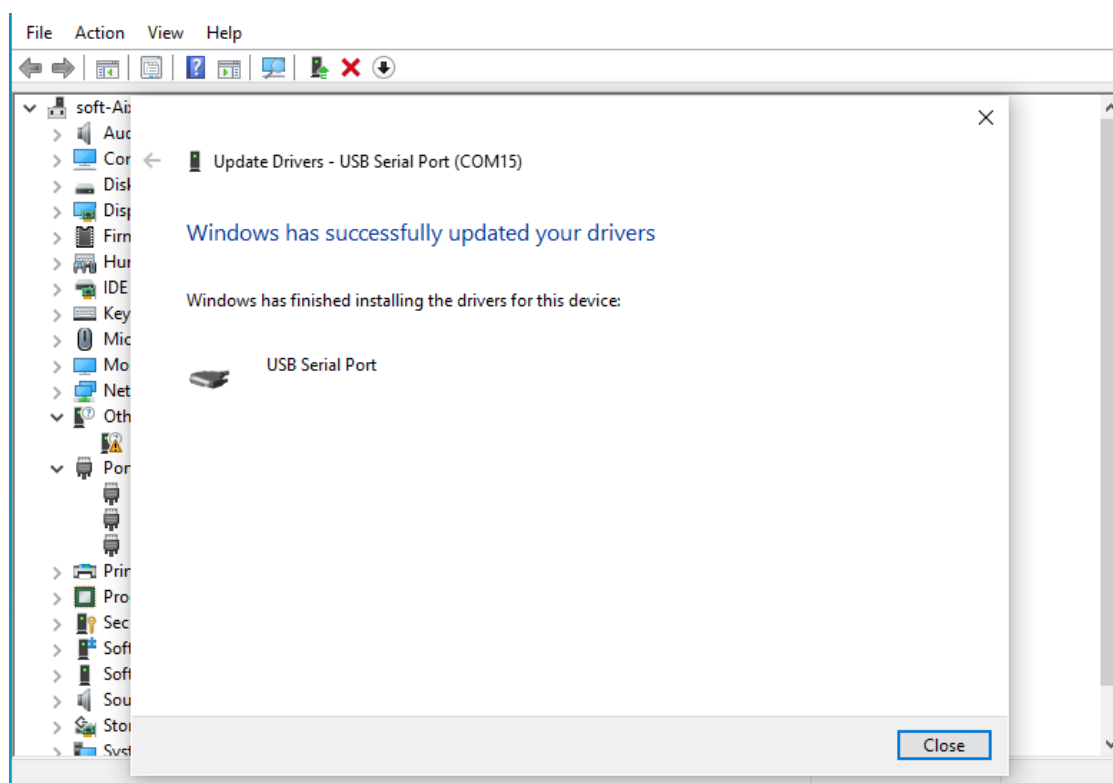


III. Find the Driver Program under “Drivers for USB”.

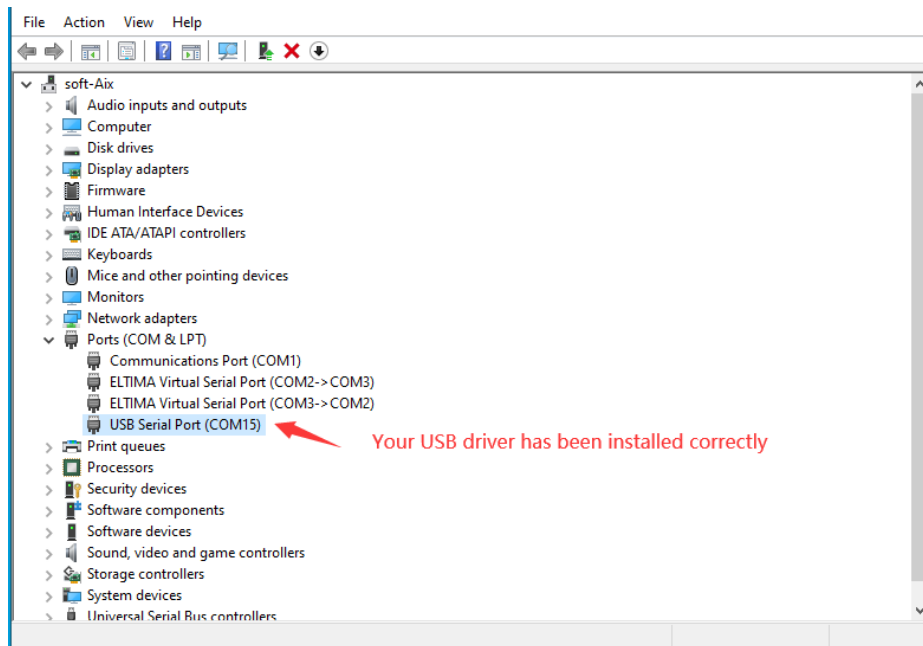
Notes: Select “Windows x64” folder if your system type is Windows 64-bit OS; otherwise, select the 'Windows x86'.



IV. Installation completed.

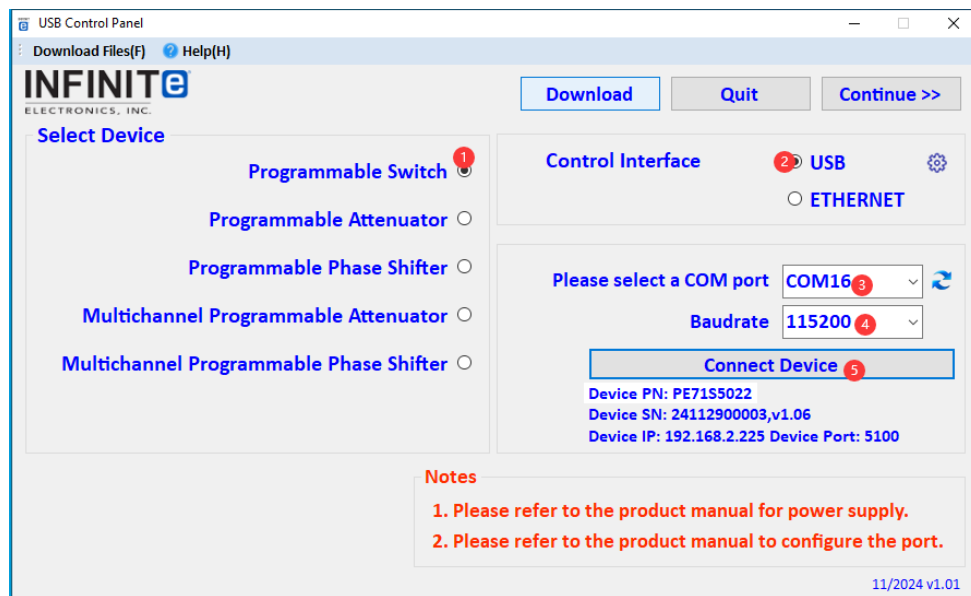


V. After those steps, you can find the “USB Serial Port (COM*)” under “Ports (COM & LPT)”.

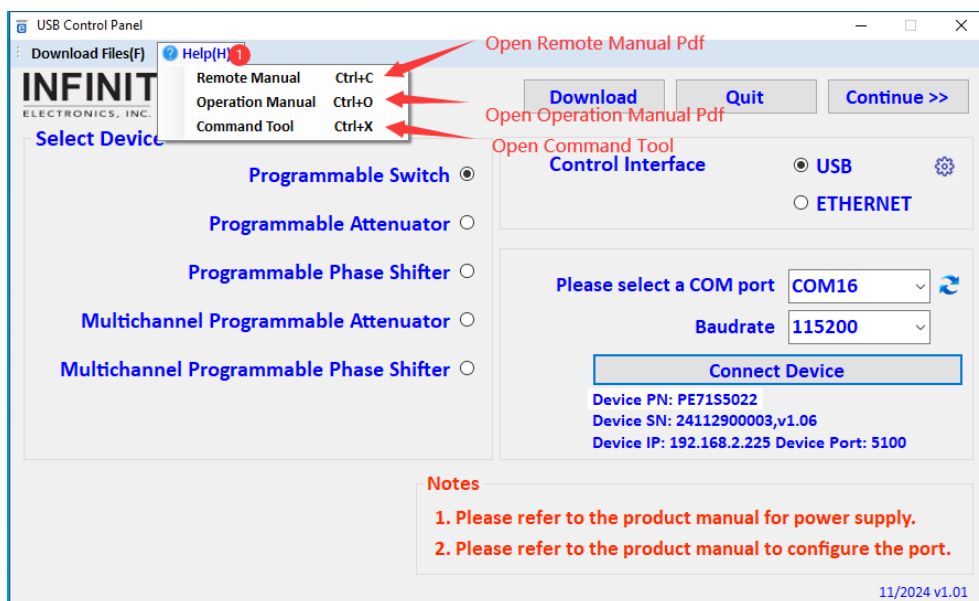


4. Device Testing

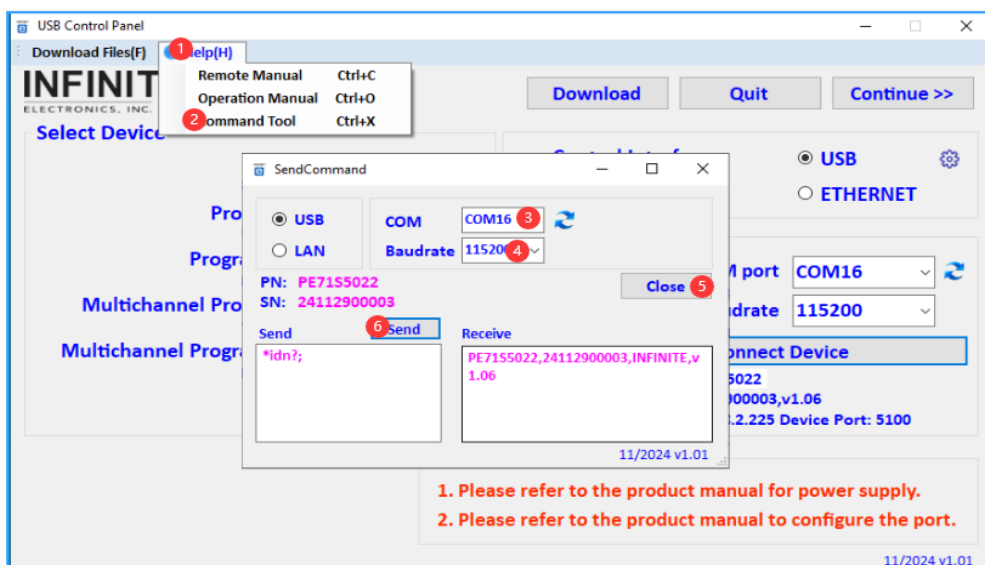
- I. Double click executable file “USB Control Panel.exe”.
 - A. Main panel



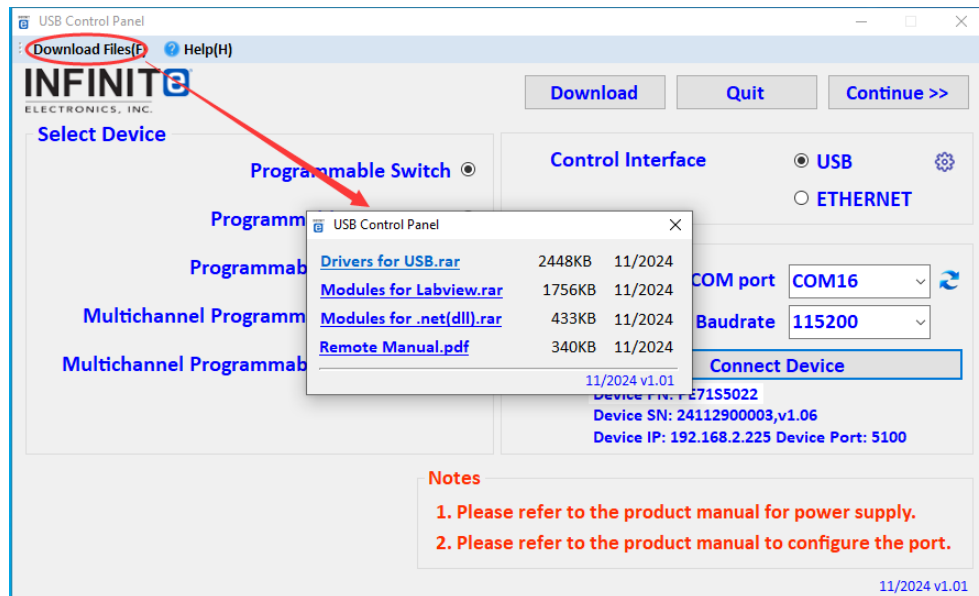
- B. Help function



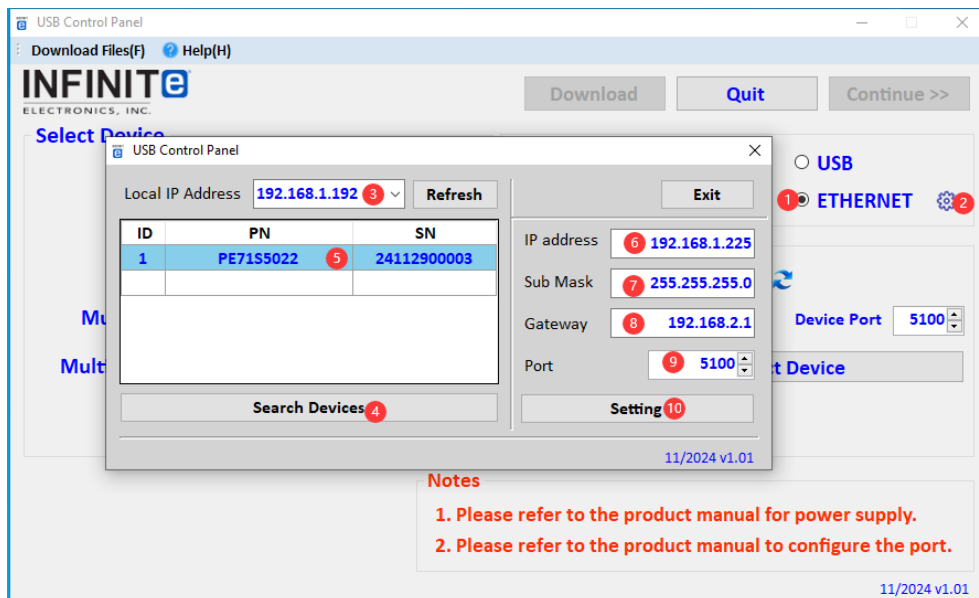
- C. Command tool



D. Download files.

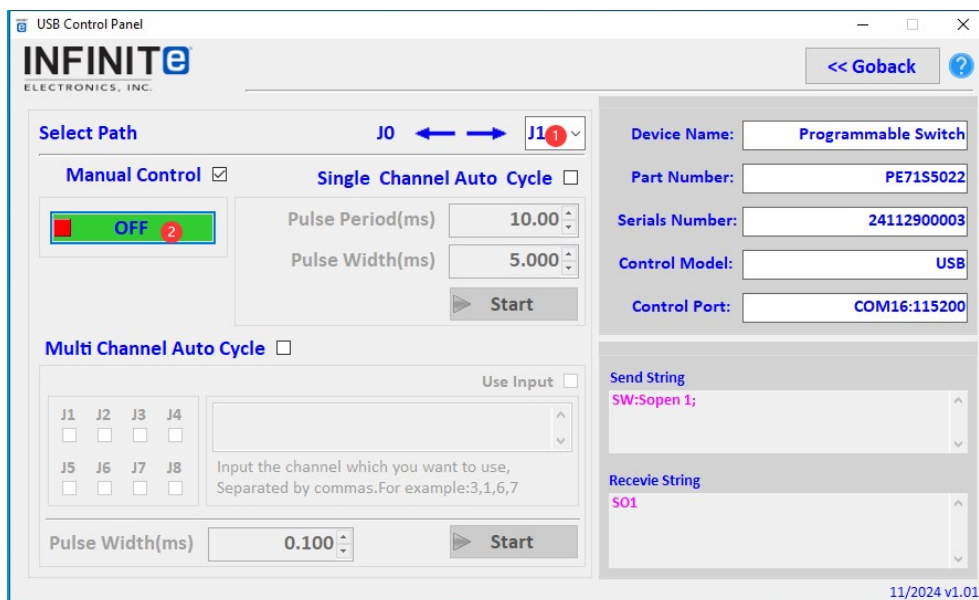


E. Modify the IP address



F. Others: Please reference the “Help” function in “USB Control Panel”.

G. Switch control interface



H. Attenuator control panel

USB Control Panel

INFINITE
ELECTRONICS, INC.

<< Goback

Control Bits8Attenuation Step(dB)0.5

Select the Attenuation Value(dB)10.0Set

Current Attenuation Value(dB)10.0Query

Current Step20

Device Name:Programmable Attenuator

Part Number:PE71S5022

Serials Number:24112900003

Control Model:USB

Control Port:COM16:115200

Send String

AT:ATT?;

Recevie String

20,10.000000

11/2024 v1.01

I. Phase shifter control panel

USB Control Panel

INFINITE
ELECTRONICS, INC.

<< Goback

Phase Shift Step(deg)0.5

Select the Phase Shift Value(deg)10.0Set

Current Phase Shift Value(deg)10.0Query

Current Step20

Device Name:Programmable Phase Shifter

Part Number:PE71S5022

Serials Number:24112900003

Control Model:USB

Control Port:COM16:115200

Send String

PS:PS?;

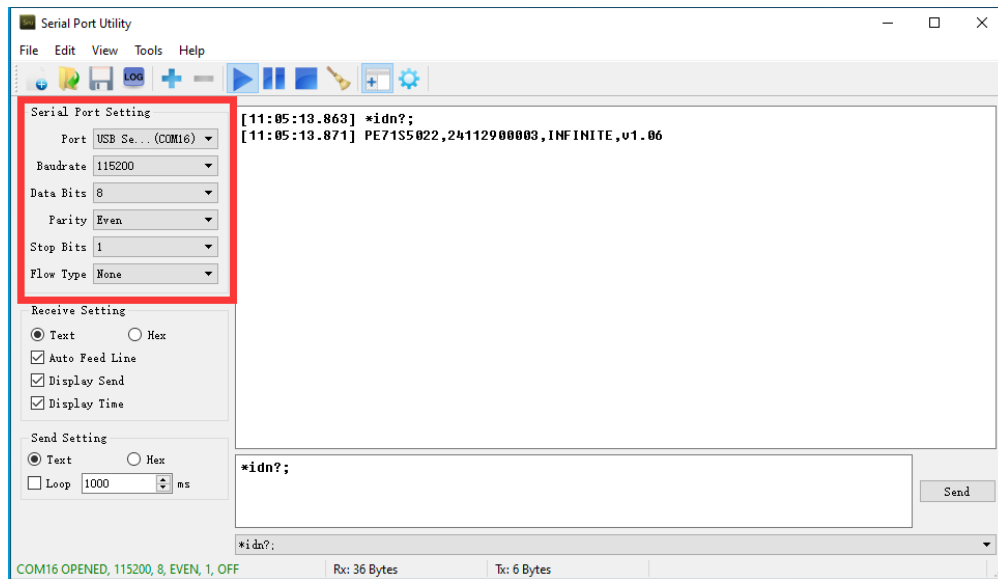
Recevie String

20,10.000000

Get Product Info

11/2024 v1.01

II. Use serial port assistant.



III. Use ethernet port assistant.

